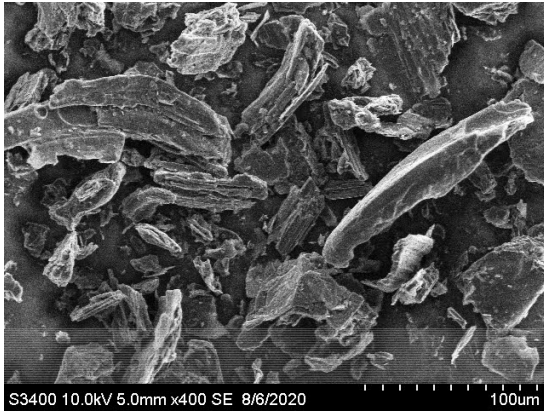


# Data Sheet

## 5926

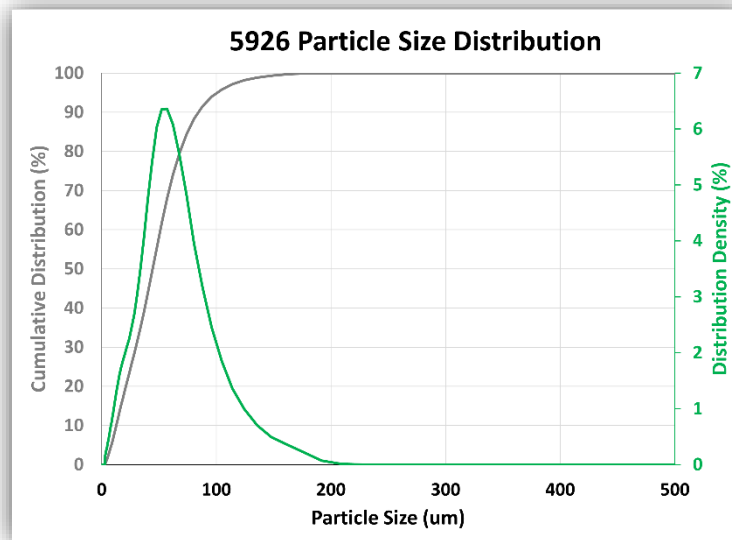


### Product Type:

5926 is a typical synthetic graphite product made from narrow-sized virgin electrodes using Superior Graphite's dedicated milling and screening technology. Main uses are stabilization of coefficient of friction, wear reduction, and increase in thermal conductivity.

### Product Characteristics:

- High Purity
- High Crystallinity
- High Lubricity
- Consistent Sizing



### Main Properties

|              |                   |             |
|--------------|-------------------|-------------|
| Carbon       | %                 | >99.5       |
| Ash          | %                 | <0.5        |
| Sulfur       | %                 | <0.2        |
| Moisture     | %                 | <0.5        |
| Size         | um                | D50 = 30-50 |
| Real Density | g/cc              | >2.2        |
| Surface Area | m <sup>2</sup> /g | >3.5        |
| Resiliency   | %                 | 20-45       |

### General Information

|               |                    |
|---------------|--------------------|
| Formula       | Synthetic Graphite |
| Chemical Name | Carbon             |
| CAS Nr        | 7782-42-5          |
| RoHS          | Certified          |
| REACH         | Registered         |

### Standard Packaging

|               |                |
|---------------|----------------|
| 50 lbs bags   | 50 bags/pallet |
| 22.68 kg bags | 50 bags/pallet |

This Data Sheet is provided for informational purposes. Superior Graphite makes no express or implied representation or warranty regarding the accuracy of the information set forth in this Data Sheet or regarding any Superior Graphite product or the use thereof (including without limitation, any warranty of quality, merchantability, or fitness for a particular use or purpose), except to the extent otherwise expressly provided in Superior Graphite's Terms and Conditions of Sale. Each customer of Superior Graphite assumes all risk and liability relating to its use of Superior Graphite's products and is responsible for independently testing Superior Graphite's products prior to such customer's use thereof to determine whether such products are fit and suitable for such customer's intended use or purpose. This Data Sheet is subject to change upon written notice.

#### Superior Graphite

10 S. Riverside Plaza, Suite 1470  
Chicago, Illinois 60606 USA  
CustomerServiceUSA@superiorgraphite.com

#### Superior Graphite Europe Ltd.

Box 13000, SE-850 13  
Sundsvall, Sweden  
CustomerServiceEU@superiorgraphite.com

#### Superior Graphite Import & Export (Shanghai) Co. Ltd

Room 821, No. 4229 Bao'an Road  
Jiading District, Shanghai 201814, P.R. China  
CustomerServiceChina@superiorgraphite.com