



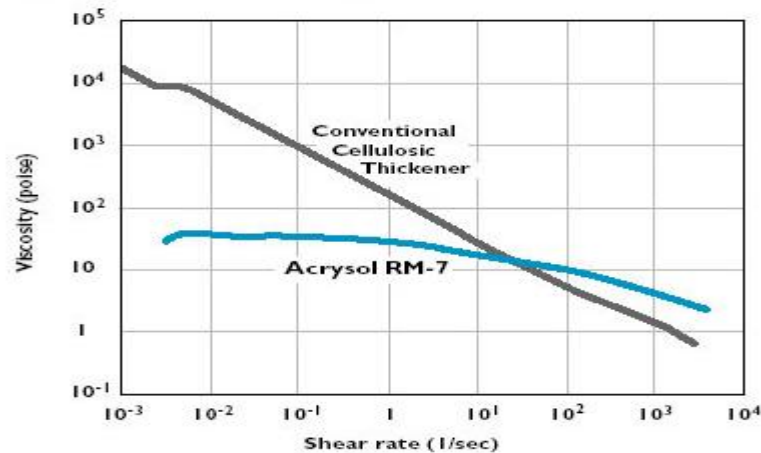
## ACRYSOL™ RM-7 Rheology Modifier

### Description

ACRYSOL™ RM-7 Rheology Modifier is a remarkably versatile hydrophobically modified alkali-soluble emulsion (HASE) thickening agent for latex coatings. Like other HASE modifiers, ACRYSOL RM-7 offers a nearly Newtonian rheology profile with lower viscosity in low-shear conditions and higher viscosity in high-shear conditions than cellulosic thickeners deliver (Figure 1). As a result, it can produce paints with a very desirable combination of good flow/leveling and film build properties.

ACRYSOL RM-7 Rheology Modifier is distinguished by a capacity to generate high-shear viscosity very efficiently, a feature that makes it exceptionally well suited to use with all-acrylic emulsions—RHOPLEX™ SG-30 Emulsion in particular—being developed for low-VOC, nonflat waterborne paints.

**Figure 1**  
Pigmentless Paint Rheology



### Exceptional ICI Efficiency

RHOPLEX™ SG-30 Emulsion and products like it have a surface treatment that gives them a greater demand for associative thickeners than many conventional all-acrylic binders. As a result, more traditional HASE products do not provide high shear (ICI) viscosity at economical use levels in paints based on these new emulsions. ACRYSOL™ RM-7 Rheology Modifier addresses this problem through a unique design that helps make it much more efficient than previous HASE agents. This efficiency offers the opportunity for notable cost savings with the new low-VOC binders. Moreover, because ACRYSOL RM-7 permits lower thickener levels, paints form films with much improved resistance properties (Figure 2).

**Figure 2**  
**Early Blister Resistance**  
 (gloss alkyd, 2 coats/1 day dry/1 hour fog box)



The advantages of ACRY SOL™ RM-7 Rheology Modifier are not limited to formulations employing the new all-acrylic binders. The exceptional efficiency of ACRY SOL RM-7 is equally advantageous in paints based on hydrophilic PVA binders. ACRY SOL RM-7 can also be used with more hydrophobic all-acrylic binders, although typically not by itself.

With these binders, ACRY SOL RM-7 Rheology Modifier tends to build both Stormer (KU) and ICI viscosity very effectively. For that reason, it is often paired with a less Stormer-efficient, ICI-viscosity-building cothickener such as ACRY SOL DR-5500 Rheology Modifier to obtain the appropriate balance of mid- and high-shear viscosity.

Comparisons of HASE modifiers in paints based on RHOPLEX™ SG-30 Emulsion and a PVA emulsion, ROVACE™ 9900 Emulsion, clearly demonstrate the advantages offered by ACRY SOL RM-7 Rheology Modifier (Tables 1 and 2). The data from these formulations indicate that ACRY SOL RM-7 offers a unique balance of efficiency, flow/sag balance, and film build across a fairly broad formulation range.

Table 1— Rheology Modifier Performance (45% PVC Sheen Formulation ROVACE™ 9900 Emulsion)					
	Dry Pounds/ 100 gallons	Viscosity		FLOW	SAG
		KU	ICI		
ACRY SOL™ DR-73 Rheology Modifier	5.2	90	1.5	1	16
ACRY SOL DR-6600 Rheology Modifier	15.4	89	2.9	9	6
ACRY SOL RM-7 Rheology Modifier	7.4	89	2.9	9	10

Table 2— Rheology Modifier Performance (20% PVC Semigloss, RHOPLEX™ SG-30 Emulsion)					
	Dry Pounds/ 100 gallons	Viscosity		FLOW	SAG
		KU	ICI		
ACRY SOL DR-73 Rheology Modifier	2	95	0.75	4	12
ACRY SOL RM 6600 Rheology Modifier	11	90	1.8	10	4
ACRY SOL RM-7 Rheology Modifier	5	92	1.5	9	8

## Standard HASE Advantages

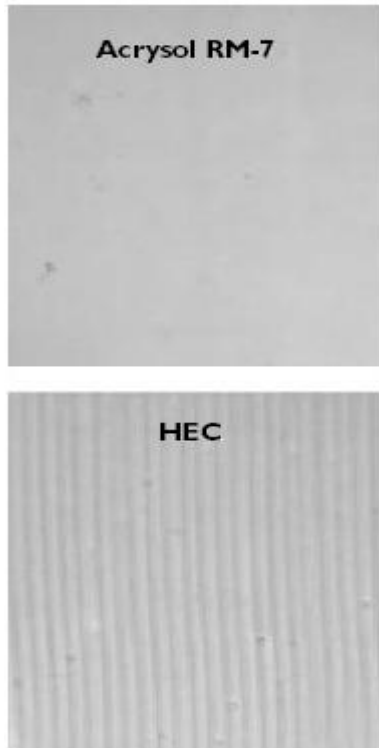
Apart from a good fit with PVAs, acrylic/PVA blends, and the new wave of all-acrylic polymers, ACRY SOL™ RM-7 Rheology Modifier offers all the advantages typically associated with high-performance HASE modifiers such as ACRY SOL DR-5500 and ACRY SOL DR-6600 Rheology Modifiers.

As indicated previously, the rheology furnished by ACRY SOL RM-7 Rheology Modifier results in a very desirable balance of flow/leveling and film build. These viscosity properties are complemented by the modifier's associative thickening mechanism, which creates a nonfloculated paint film. The flow/leveling properties and associative thickening provided by ACRY SOL RM-7 translate into a paint film that is smoother and more uniform with fewer brush marks than one produced by HEC (Figure 3). These features facilitate maximum gloss development.

ACRY SOL RM-7 Rheology Modifier also produces paints with superb spatter resistance. It is supplied a liquid, which makes for easier handling and formulating than HEC-type thickeners, which come in powder form. Finally, the structure and composition of ACRY SOL RM-7 make it chemically resistant to microbial and enzymatic degradation.

Like ACRY SOL DR-5500 and ACRY SOL DR-6600 Rheology Modifiers, ACRY SOL RM-7 Rheology Modifier can be used very successfully as a sole thickener in many formulations. It can also be used in combination with other associative rheology modifiers—anionic or nonionic—or with cellulosic products to address a wide array of rheological needs.

**Figure 3**  
**Paint Drawdowns**



Features	Benefits
Efficient High-shear-viscosity builder	Greater film build
Broad latex compatibility	Potential for thickener consolidation
Low-viscosity Liquid	Ease and convenience of handling
Synthetic	Resistance to microbial attack
Excellent flow and leveling	Minimal brush marks

## Typical Physical Properties

(These properties are typical but do not constitute specifications).

Property	Typical Values
Compositon	HASE (hydrophobically modified alkali-soluble emulsion)
Apperance	White liquid
Solids, %	30
pH	3-4
Brookfield viscosity, cP (max) #4 spindle @60 rpm	100
Density, lb/gal	8.9
Storage temperature, °F <sup>1</sup>	
Minimum	34
Maximum	120
<sup>1</sup> Protec from freezing	

## Formulating Recommendations

One of the more useful attributes of ACRY SOL™ RM-7 Rheology Modifier is impressive formulating latitude. In addition to being compatible with a wide variety of binders employed in low-VOC paints, ACRY SOL RM-7 offers formulators the option of adding the modifier at different stages in the manufacturing process.

Paints employing ACRY SOL RM-7 Rheology Modifier do not require a thickener premix stage; the modifier can be added directly to a formulation without being first diluted or solubilized so long as two conditions are met: 1) there must be sufficient base [e.g., ammonia hydroxide, 2- dimethylamino-2-methyl-1-propanol (AMP-95™ Multifunctional Amine) in the mix before the rheology modifier is added; and 2) the mix must be agitated thoroughly enough to completely incorporate the modifier. Diluting ACRY SOL RM-7 with water before adding it will facilitate blending.

### Options for Adding ACRY SOL RM-7 Rheology Modifier

#### *Pigment Grind*

1. Adjust pH and add liquid ingredients, including ACRY SOL RM-7 Rheology Modifiers, to millbase before charging the pigments and extenders
- or
2. Adjust pH, begin grind, then add liquid ingredients to millbase for the last 5 to 10 minutes.

## ***Letdown/Post Viscosity Adjustment***

1. If necessary, adjust pH of paint to at least 9.0.
2. Slowly add dilute ACRY SOL™ RM-7 Rheology Modifier.
3. Ensure adequate agitation.
4. Adjust final pH (if necessary).

## **Guidelines for Optimizing Performance**

### **Dispersant Choice**

In some instances, interactions between dispersants and associative thickeners can make latex paints unstable. In paints utilizing HASE thickeners such as ACRY SOL™ RM-7 Rheology Modifier, problems of this sort frequently involve the presence of an acid copolymer dispersant. In these cases, a HASE agent can displace the copolymer dispersant from the pigment and extenders, a phenomenon that may lead to a flocculated paint.

If circumstances permit, a paint manufacturer can minimize the chance of adverse interactions by employing polyacid dispersants such as TAMOL™ 1254 Dispersant or TAMOL 851 Dispersant at a level of 0.5%–1.2% with ACRY SOL RM-7.

Unfortunately, paint manufacturers do not always have the option of using a polyacid dispersant with ACRY SOL RM-7 Rheology Modifier. In some formulations, key performance requirements may compel the manufacturer to use an acid copolymer dispersant such as TAMOL 165A Dispersant. If such is the case, the formulator should be wary of possible compatibility problems.

Stability may also be an issue in formulations that employ a combination of ACRY SOL RM-7 Rheology Modifier and a HEUR modifier. Just as difficulties can result from interactions between ACRY SOL RM-7 and an acid copolymer dispersant, they can also occur from interactions between the HEUR agent and a polyacid dispersant. In tests on paints containing both HASE and HEUR products, TAMOL 1124 Dispersant, an acid copolymer with a hydrophilic comonomer, has produced good results.

### **Base**

The type of base used to neutralize the associative thickener is important on account of the detrimental effect on film character and formulation stability. Properties that can be impacted by the neutralizer include thickening efficiency, water sensitivity (scrub and blister resistance), and pH stabilization.

The best bases to use as neutralizers are ammonium hydroxide and 2-amino-2-methyl-1-propanol. Most formulations require a minimum of 0.1 pound of 28% ammonium hydroxide or 0.15 pound of AMP-95™ Multifunctional Amine per 100 gallons of paint to ensure that all the acid groups in one pound of ACRY SOL RM-7 Rheology Modifier are neutralized. “Hard” bases such as potassium hydroxide or sodium hydroxide can also be used, but ACRY SOL RM-7 does not respond as well to them so higher concentrations are necessary.

With a 2% solution of ACRY SOL RM-7 Rheology Modifier neutralized with 28% ammonium hydroxide, thickening begins at a pH of approximately 6. The thickener polymer is completely solubilized at a pH of about 8.

## Recommended Usage Levels

The concentration of ACRY SOL™ RM-7 Rheology Modifier required in a paint depends both on the type of binder (i.e. composition, particle size, mode of stabilization) and the nature of the formulation itself. ACRY SOL RM-7 is best suited to use as a sole thickener in gloss, semigloss and satin paints based on comparatively hydrophilic acrylic or acrylic/vinyl acrylic polymers. When ACRY SOL RM-7 is employed in this role, formulators typically employ from 8 to 30 wet pounds of polymer per 100 gallons of paint. ACRY SOL RM-7 Rheology Modifier is normally used at lower levels when employed as a cothickener. In such applications, it can be paired with other HASE (e.g., ACRY SOL DR-1, ACRY SOL TT-935) or HEUR (e.g., ACRY SOL RM-8W, ACRY SOL SCT-275) Rheology Modifiers, clay, and cellulosic thickeners to good effect.

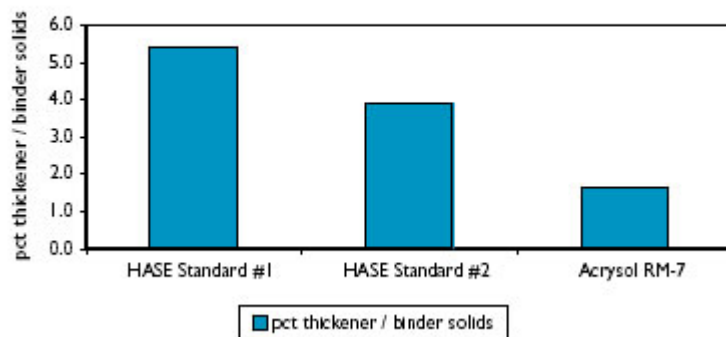
## Applications

As indicated previously, the exceptional thickening efficiency of ACRY SOL RM-7 Rheology Modifier makes it appropriate for some exterior paints. In a trial conducted with a 24% PVC/34% VS exterior semigloss experimental paint based on a comparatively hydrophilic binder and neutralized with ammonium hydroxide, formulators needed 2-1/2 to 4 times as much conventional HASE thickener to achieve the same viscosity as with ACRY SOL RM-7 (Figure 4). In fact, the results from this trial actually suggest that ACRY SOL RM-7 can be a viable alternative to less efficient HEUR modifiers in some formulations.

One caution: While formulations thickened with ACRY SOL RM-7 Rheology Modifier can function successfully outdoors, *all manufacturers should verify water sensitivity (e.g., early blister resistance and alkali resistance) by testing before proceeding to commercial production.* Following are general rules of thumb to help obtain maximum exterior properties with ACRY SOL RM-7 (These recommendations are meant only as guidelines; all formulations should be verified by testing):

- limit use level to 2% (dry pounds) or less on binder solids;
- use quality exterior binders;
- use zinc oxide when practical;
- use fugitive base (i.e., ammonium hydroxide).

**Figure 4**  
**Typical Rheology Modifier Levels**



## Starting Point Formulations

Following are three starting point formulations incorporating ACRY SOL™ RM-7 Rheology Modifier. These formulations have been qualified with the specified components; substitutions should be tested carefully to ensure that users obtain the same properties.

Low-VOC Interior Satin Formulation SH-7-1 (ROVACE™ 9900 Emulsion, ACRY SOL™ DR-1 and ACRY SOL RM-7 Rheology Modifiers)		
Ingredient	Pounds	Gallons
Water	150.0	17.97
AMP-95™ Multifunctional Amine	2.0	0.26
TAMOL™ 1254 Dispersant	5.1	0.50
Igepal™ CTA 639W <sup>1</sup>	2.0	0.23
Colloids 643 deformer <sup>2</sup>	2.0	0.28
KATHON™ LX 1.5% Preservative <sup>2</sup>	1.7	0.20
Ti-Pure™ R-706 titanium dioxide <sup>3</sup>	150.0	4.49
Nyral™ 200 extender <sup>4</sup>	40.0	1.68
Duramite™ extender <sup>5</sup>	75.0	3.32
Minex™ 4 extender <sup>6</sup>	75.0	3.44
Water	50.0	5.99
Colloids 643 deformer	1.5	0.21
ROVACE™ 9900 Emulsion	315.0	35.03
ROPAQUE™ Ultra Opaque Polymer	60.0	7.02
Propylene glycol	24.0	2.78
TRITON™ X-405 Surfactant	2.0	0.22
AMP-95™ Multifunctional Amine	3.2	0.41
ACRY SOL™ DR-1 Rheology Modifier	11.4	1.28
ACRY SOL™ RM-7 Rheology Modifier	10.7	1.21
Water	<u>112.3</u>	<u>13.48</u>
<b>Totals</b>	<b>1092.9</b>	<b>100.00</b>
Initial Stormer viscosity, KU	93±2 KU	
Initial ICI viscosity, poise	1.20±0.1	
Initial pH	9.0±0.2	
Typical gloss, 60°/85°	6/7	
Total PVC, %	48	
Volume solids, %	35	
Voc, g/l	<10	

<sup>1</sup>Rhone-Poulenc

<sup>4</sup>R.P. Vanderbilt Company, Inc.

<sup>2</sup>Rhodia

<sup>5</sup>ECC America, Inc.

<sup>3</sup>E.I. Dupont de Nemours Company

<sup>6</sup>Unimin Corporation

**Low-VOC Interior Semigloss  
Formulation SG-Tex-5 (RHOPLEX™ SG-30 and ROVACE™ 9900 Emulsions,  
ACRY SOL™ RM-7 Rheology Modifier)**

<b>Ingredient</b>	<b>Pounds</b>	<b>Gallons</b>
Water	50.0	5.99
TAMOL™ 1254 Dispersant	4.6	0.45
TRITON™ CF-10 Surfactant	2.2	0.25
Drewplus™ L-475 defoamer <sup>1</sup>	1.1	0.15
KATHON™LX 1.5% Preservative	1.7	0.20
Ti-Pure™ R-900 titanium dioxide <sup>2</sup>	175.3	5.25
Water	50.0	5.99
ROPAQUE™ Ultra Opaque Polymer	51.3	6.00
Drewplus L-475 defoamer	1.9	0.25
RHOPLEX™ SG-30 Emulsion	230.0	26.03
ROVACE™ 9900 Emulsion	230.0	25.58
Texanol coalescent <sup>3</sup>	12.0	1.51
AMP-95™ Multifunctional Amine	4.0	0.51
ACRY SOL™ RM-7 Rheology Modifier	25.4	2.87
Water	<u>158.4</u>	<u>18.97</u>
<b>Totals</b>	<b>997.9</b>	<b>100.00</b>

Initial Stormer viscosity, KU	95±2
Initial ICI viscosity, poise	1.9±0.2
Initial pH	9.0±0.2
Typical gloss, 20°/60°	30/65
Total PVC, %	25
Volume solids, %	34
Voc, g/l	<60

<sup>1</sup>Ashland Inc.

<sup>2</sup>E. I. Dupont de Nemours Company

<sup>3</sup>Eastman Chemical Company



**Interior/Exterior semigloss  
SG-7-3 (RHOPLEX™ SG-30 Emulsion, ACRY SOL™ RM-7 Rheology Modifier)**

Ingredient	Pounds	Gallons
Water	83.5	10.00
Propylene glycol	37.4	4.32
BYK™-022 defoamer <sup>1</sup>	1.0	0.12
KATHON™ LX 1.5% Preservative	1.8	0.21
Ti-Pure™ R-746 titanium dioxide <sup>2</sup>	326.8	16.82
RHOPLEX™ SG-30 Emulsion	501.4	56.75
Texanol™ coalescent <sup>3</sup>	12.5	1.58
Aerosol™ OT-75 surfactant <sup>4</sup>	1.5	0.16
BYK-022 defoamer	1.0	0.13
Ammonia (28%)	3.0	0.40
ACRY SOL™ RM-7 Rheology Modifier	17.0	1.92
Water	<u>63.3</u>	<u>7.59</u>
<b>Totals</b>	<b>1050.2</b>	<b>100.00</b>
Initial Stormer viscosity, KU	90±2	
Initial ICI viscosity, poise	1.6±0.2 poise	
Initial pH	9.0±0.2	
Typical gloss, 20°/60°	30/70	
Total PVC, %	22	
Volume solids, %	34	
Voc, g/l	150	

<sup>1</sup>BYK- Chemie

<sup>2</sup>E.I. Dupont de Nemours Company

<sup>3</sup>Eastman Chemical Company

<sup>4</sup>Cytec Industries, Inc.

**Handling  
Precautions**

Before using this product, consult the Material Safety Data Sheet (MSDS)/Safety Data Sheet (SDS) for details on product hazards, recommended handling precautions and product storage.

**Storage**

Store products in tightly closed original containers at temperatures recommended on the product label.

**Disposal  
Considerations**

Dispose in accordance with all local, state (provincial) and federal regulations. Empty containers may contain hazardous residues. This material and its container must be disposed in a safe and legal manner.

It is the user's responsibility to verify that treatment and disposal procedures comply with local, state (provincial) and federal regulations. Contact your Dow Coating Materials Technical Representative for more information.

**Chemical  
Registration**

Many countries require the registration of chemicals, either imported or produced locally, prior to their commercial use. Violation of these regulations may lead to substantial penalties imposed upon the user, the importer or manufacturer, and/or cessation of supply. It is in your interests to ensure that all chemicals used by you are registered. Dow does not supply unregistered products unless permitted under limited sampling procedures as a precursor to registration.

**Product  
Stewardship**

Dow has a fundamental concern for all who make, distribute, and use its products, and for the environment in which we live. This concern is the basis for our product stewardship philosophy by which we assess the safety, health, and environmental information on our products and then take appropriate steps to protect employee and public health and our environment. The success of our product stewardship program rests with each and every individual involved with Dow products - from the initial concept and research, to manufacture, use, sale, disposal, and recycle of each product.

**Customer Notice**

Dow strongly encourages its customers to review both their manufacturing processes and their applications of Dow products from the standpoint of human health and environmental quality to ensure that Dow products are not used in ways for which they are not intended or tested. Dow personnel are available to answer your questions and to provide reasonable technical support. Dow product literature, including safety data sheets, should be consulted prior to use of Dow products. Current safety data sheets are available from Dow.

**Contact:**

North America: 1-800-447-4369  
Latin America: (+55)-11-5188-9000  
Europe: (+800)-3-694-6367  
Asia-Pacific: (+800)-7776-7776  
<http://www.dowcoatingmaterials.com>

NOTICE: No freedom from infringement of any patent owned by Dow or others is to be inferred. Because use conditions and applicable laws may differ from one location to another and may change with time, Customer is responsible for determining whether products and the information in this document are appropriate for Customer's use and for ensuring that Customer's workplace and disposal practices are in compliance with applicable laws and other government enactments. The product shown in this literature may not be available for sale and/or available in all geographies where Dow is represented. The claims made may not have been approved for use in all countries. Dow assumes no obligation or liability for the information in this document. References to "Dow" or the "Company" mean the Dow legal entity selling the products to Customer unless otherwise expressly noted. NO WARRANTIES ARE GIVEN; ALL IMPLIED WARRANTIES OF MERCHANTABILITY OR FITNESS FOR A PARTICULAR PURPOSE ARE EXPRESSLY EXCLUDED.



UNRESTRICTED – May be shared with anyone

®™ Trademark of The Dow Chemical Company ("Dow") or an affiliated company of Dow  
ACRYSOL™ RM-7 Rheology Modifier / Dow Coating Materials

884-00202-0113-NAR-EN-CDP  
03/2013, Rev. 0