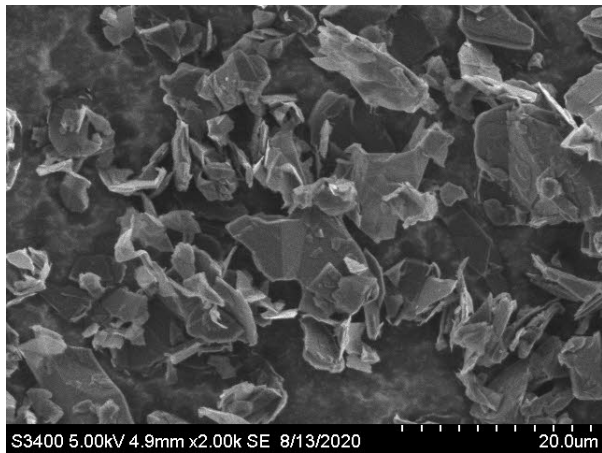


# Data Sheet

## 2939APH

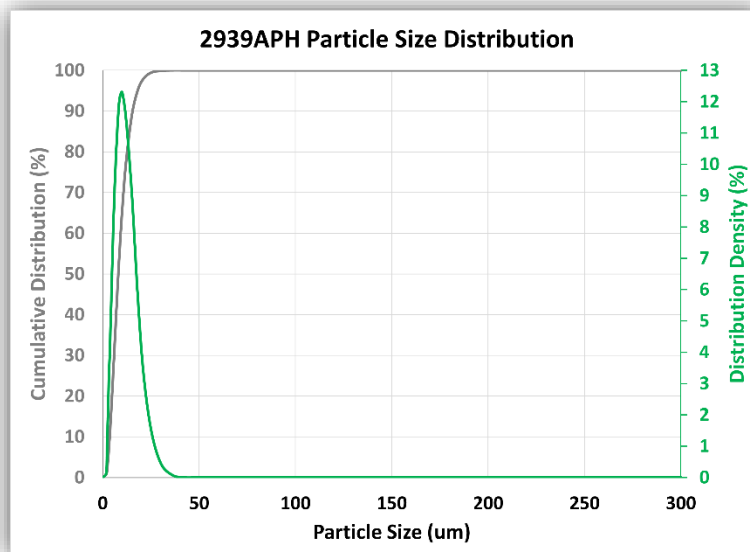


### Product Type:

2939APH is a purified flake product manufactured using Superior Graphite's proprietary electro-thermal purification technology. This continuous high-temperature process exposes flake graphite to extremely high temperatures so that impurities, including inorganic contaminants, are sublimed. 2939APH is the fine size grade of the 'Thermally Purified Flake' product line produced using Superior Graphite's dedicated milling and screening technology. Main uses are coefficient of friction reduction, wear reduction, coatings and as a relatively inexpensive battery material performance additive.

### Product Characteristics:

- High Purity
- High Crystallinity
- Defined Texture
- Well-Defined Particle Size Distribution



### Main Properties

Carbon	%	>99.9
Ash	%	<0.1
Moisture	%	<0.5
Size	um	D50 = 7-9
Scott Volume	g/cc	0.07-0.11
Surface Area	m <sup>2</sup> /g	<9.5
ICP Iron	ppm	<100

### General Information

Formula	Natural Graphite
Chemical Name	Purified Graphite Powder
CAS Nr	7782-42-5
RoHS	Certified
REACH	Exempted

### Standard Packaging

30 lbs bags	45 bags/pallet
-------------	----------------

This Data Sheet is provided for informational purposes. Superior Graphite makes no express or implied representation or warranty regarding the accuracy of the information set forth in this Data Sheet or regarding any Superior Graphite product or the use thereof (including without limitation, any warranty of quality, merchantability, or fitness for a particular use or purpose), except to the extent otherwise expressly provided in Superior Graphite's Terms and Conditions of Sale. Each customer of Superior Graphite assumes all risk and liability relating to its use of Superior Graphite's products and is responsible for independently testing Superior Graphite's products prior to such customer's use thereof to determine whether such products are fit and suitable for such customer's intended use or purpose. This Data Sheet is subject to change upon written notice.

#### Superior Graphite

10 S. Riverside Plaza, Suite 1470  
Chicago, Illinois 60606 USA  
CustomerServiceUSA@superiorgraphite.com

#### Superior Graphite Europe Ltd.

Box 13000, SE-850 13  
Sundsvall, Sweden  
CustomerServiceEU@superiorgraphite.com

#### Superior Graphite Import & Export (Shanghai) Co. Ltd

Room 821, No. 4229 Bao'an Road  
Jiading District, Shanghai 201814, P.R. China  
CustomerServiceChina@superiorgraphite.com