

TECHNICAL DATA SHEET

Issued Date: 04-05-2021

Product Name: Vegetable Red 1C Powder WS87

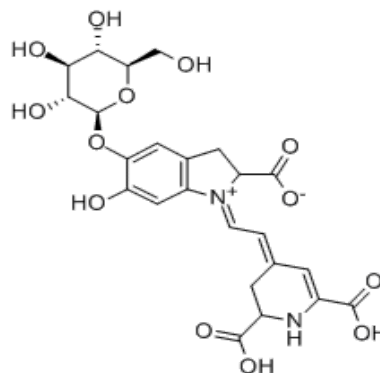
Product Code: 300202

Description

The product is a pure, natural, and water-soluble food color powder. It is extracted from the roots of the red beets (*Beta vulgaris L.*). The principal coloring component is betanin.

Identification

| | |
|--------------------------|-------------------------|
| Chemical Name | Betanin |
| Synonyms | Beetroot Red |
| Latin Name | <i>Beta vulgaris L.</i> |
| CAS No. | 7659-95-2 |
| E No. | E162 |
| Empirical Formula | $C_{24}H_{26}N_2O_{13}$ |
| Molecular Weight | 550.48 |



Solubility

Easily dissolves in water, insoluble in acetone, ethanol, and other organic solvents.

Stability & Storage

Stability: The pigment's resistance to light and heat is good in an acidic and neutral medium.

Storage condition: Store in a tightly closed container in a cool, dark place.

Beneficial Properties

Colorant: Produces a bright red color in acidic and neutral aqueous solution.

Application

1. Frozen drinks (except for edible ice), beverages, cake decoration, liqueur;
2. Candy, fruit & vegetable juice (including fermentation products, etc.).

Regulatory Status

EU Food Additives Regulation EC No.1333/2008: E162 Beetroot red, Betanin.

USA Food Additives CFR Title 21 Part 73.530 Vegetable Juice.

Labeling

EU: Beetroot red, Betanin

USA: Colored with Vegetable Juice, Vegetable Juice (color)

Legal Notice

This information is true and correct to the best of our knowledge and experience. It is intended for informational purposes only and not as a recommendation or endorsement. Product names are not necessarily descriptive or indicative of composition or function. The information given in this publication may be used at your own discretion and risk. We recommend performing your own evaluations prior to use. We do not assume any liability related to your product or its use. We recommend that you comply with all applicable laws and regulations and observe all applicable third-party rights.